

Joslyn Art Museum WORKSHOP – Art Talk – The Power of the Image

Objectives:

- Learn about symbols and their meanings in *The Virgin of the Rosary*
- Learn about symbols and their meanings in *Our Lady of Guadalupe*
- Compare and contrast the Our Lady of Guadalupe image with the Statue of Liberty image
- Understand how symbols contribute to the power of the image
- Use this Art Talk as a brainstorming activity before starting the **Production** or **Language Arts** sections of the **Lesson Plan – VTOR**

Instructions:

- Talk about symbols and icons. Discuss their definitions.
- Gather around *The Virgin of the Rosary*. Discuss the story of it and other "dressed statue" paintings.
- Hand out *The Virgin of the Rosary* diagram. Talk about the symbols and their meanings.
- Hand out other "dressed statue" painting images and identify the symbols and discuss their meanings.
 - Refer to the **Teaching Poster** for additional information about the symbols.
- Move on to the image of *Our Lady of Guadalupe*. Hand out *Our Lady of Guadalupe* diagram. Talk about the symbols and their meanings.
 - Refer to "The Symbolism of the Image" document for additional information about the symbols.
- Move on to the image of the Statue of Liberty
 - Refer to "The Symbolism of the Statue of Liberty" document for additional information about the symbols
- Compare and contrast Our Lady of Guadalupe with the Statue of Liberty



Virgin as Pilgrim
 ca. 1733, Anonymous, Peru, Lima School
 Oil on canvas 32 3/4 x 25 1/4 inches
 Private Collection Lima



Our Lady of Pomata
 1700–50
 Peru, Cuzco School
 Oil on canvas, 26 x 21 inches



Virgin of Pomata (Virgin of Pomata)
 17th Century, Anonymous, Bolivia
 Oil on canvas, 183 x 115.5 cm
 Museo Nacional de Arte, La Paz

Discussion Questions:

- What do you see?
- What are the tangible attributes of the images? What are their similarities and their differences?
- What are their cultural similarities and differences?
- How do you identify an icon or powerful image? What are its qualities?
- Should both Our Lady of Guadalupe and the Statue of Liberty be considered an icon? An emblem of a nation?
- When looking at Our Lady of Guadalupe and the Statue of Liberty, two matriarchal figures in a patriarchal society, discuss their strengths and weaknesses as an icon. Do they have a strong male equivalent?
- Discuss how they are symbols of enlightenment and freedom.
- Discuss the figures as monuments. How are they displayed in their nations? How are they used?

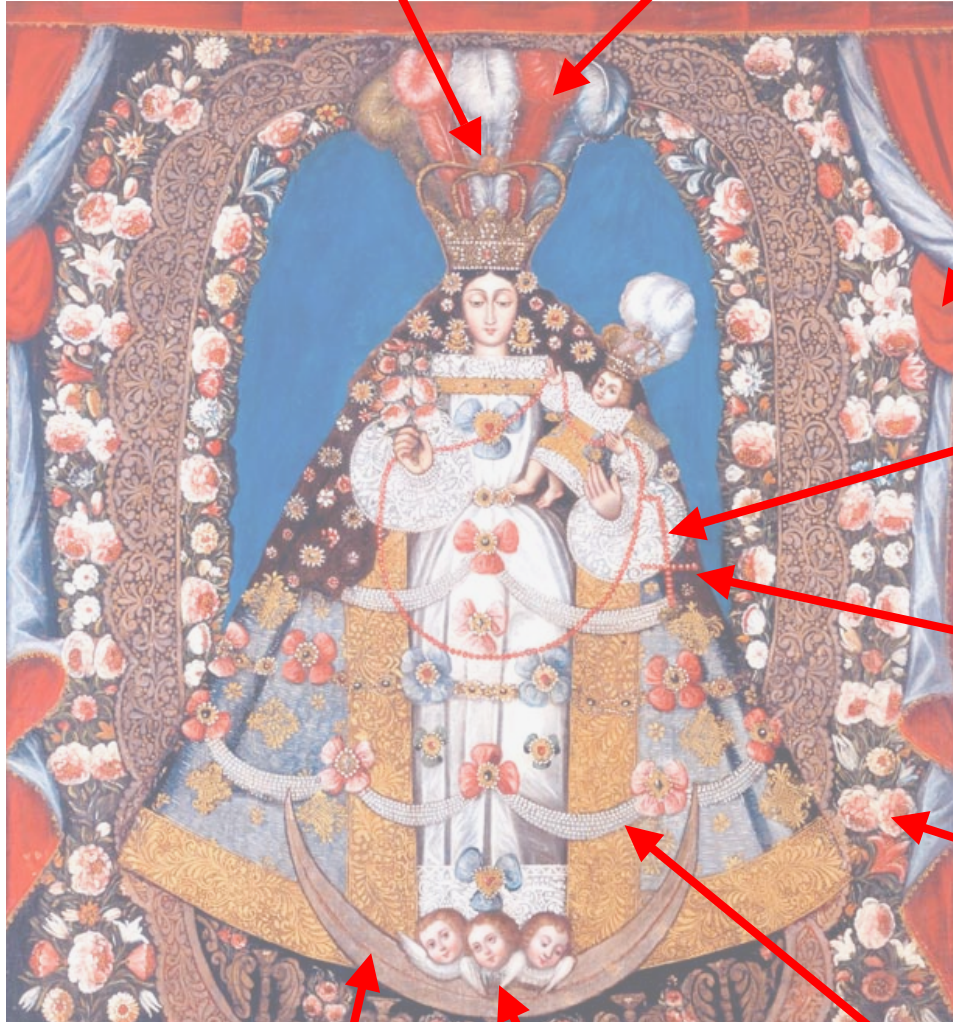
Extensions:

- Language Arts: Use Our Lady of Guadalupe and Statue of Liberty images.
- For each image write of list of words that relate to it.
- Identify the types of words listed.
- What type is used the most? Why?
- Were any words on both lists?
- Use the words to create poems following the poetry examples from the **Engage** section of the **Lesson Plan-VTOR**.

The Virgin of the Rosary Symbol Diagram

Crown:

Feather plumes:



Red curtains:

Rosary:

Coral:

Flowers:

Crescent moon:

Cherubs:

Pearls:

Our Lady of Guadalupe Symbol Diagram

Eyes:

Brooch:



Luminous light:

Bow:

Stars:

Mantle:

Dress color:

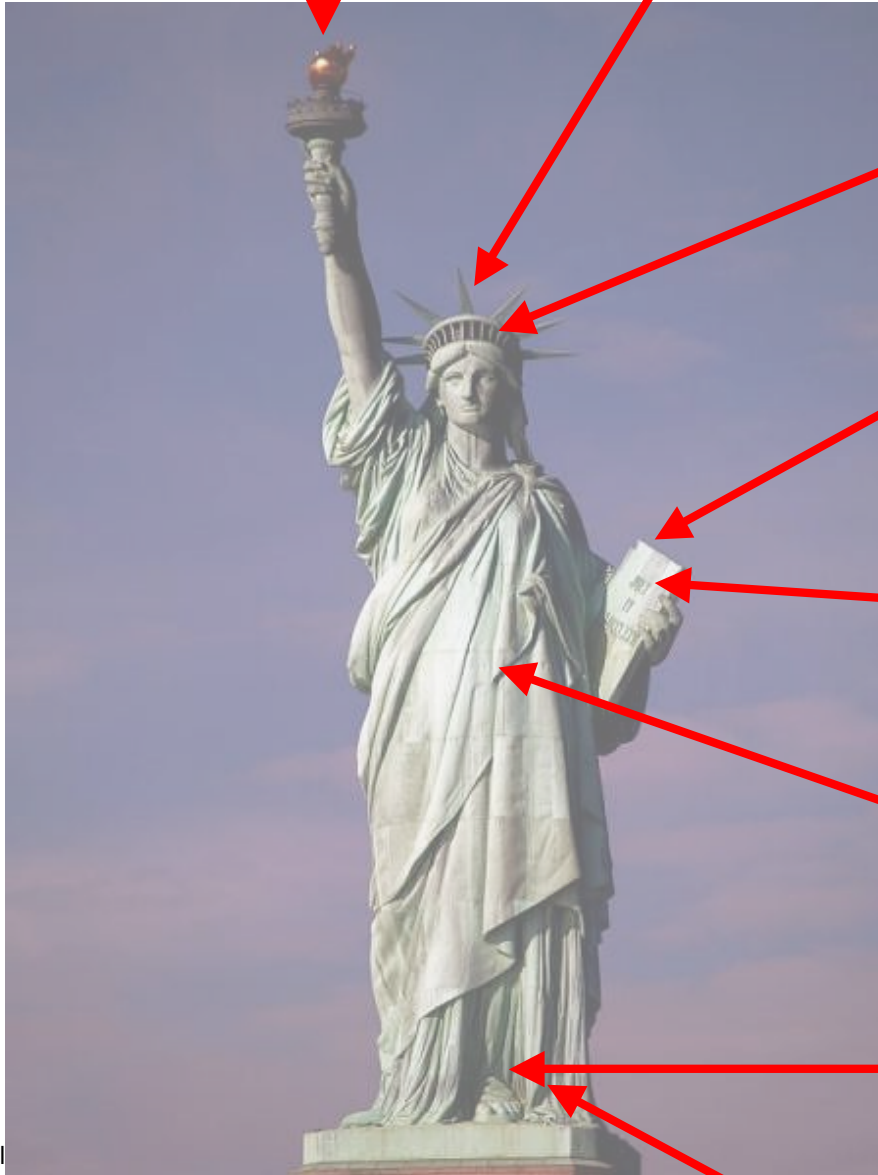
Angel:

Moon:

Statue of Liberty Symbol Diagram

Torch:

Crown:



Windows:

Tablet:

Writing:

Robe:

Sandals:

Broken chains:

<http://inlinethumb40.webshots.com/5095/2360889000028655624S600x600Q85.jpg>